

TOUR TOPICS

AT THE BALTIMORE MUSEUM OF ART

*Contemporary
Galleries will reopen
in Fall 2012.



Parts of Art

Discover how artists use line, shape, color, pattern, texture, and space to convey ideas and feelings.

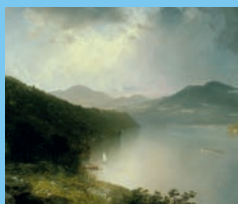
Grades 1–12
Art Standard 1



Collection Highlights

Explore treasures of the BMA while developing skills for looking at art.

All Grades
Art Standard 1, 2, 4



Land, Sea, and Sky

Explore the grandeur of nature through artists' eyes and learn techniques for creating the illusion of light and space on a flat surface.

Grades 3–12
Art Standard 1, 2



Materials and Methods

Investigate how artists transform ordinary materials—wood, metal, clay, fiber, glass—into extraordinary works of art.

Grades 3–12
Art Standard 3



Sculpture Inside and Out

Examine the shape, texture, materials, scale, and meaning of sculpture inside the Museum's galleries and outside in the gardens.

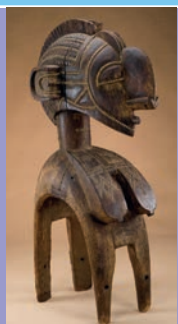
All Grades
Art Standard 1, 2, 3



Which Ism Is It?

Identify major "isms" of modern art.

Grades 4–12
Art Standard 1, 2



World Cultures in Art

Learn about the art, traditions, and beliefs of cultures around the globe.

All Grades
Art Standard 1, 2
Social Studies
Standard 2, 5, 6



An American Story

Learn about American heritage and the history of the Colonial and Federal periods through paintings, decorative arts, and period rooms.

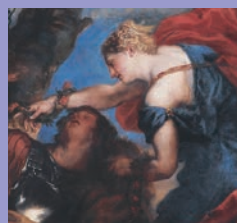
Grades 4–12
Art Standard 1, 2
Social Studies Standard 2, 5, 6



The Art and Science of Materials

Examine the characteristics of various materials and consider how each one suits an artist's purpose.

Grades 4–10
Art Standard 3
Science Standard 1



Art that Tells Stories

Explore an artwork's narrative, characters, and setting to discover an unexpected story.

All Grades
Art Standard 1, 2, 3
Reading/Language Arts
Standard 1

TOUR TOPICS

AT THE BALTIMORE MUSEUM OF ART



Animals

Discover animals both realistic and fanciful in painting, sculpture, and decorative arts.

Grades K–5
Art Standard 1, 2



Pictures of People

Learn how artists convey information about people from around the world through pose, expression, costume, and setting.

All Grades
Art Standard 1, 2



The Cone Wing

Discover the power and beauty of artworks by modern masters like Gauguin and Matisse in the collection of Claribel and Etta Cone.

All Grades
Art Standard 1, 2



Art that Inspires Contemplation

Use artworks from a range of cultures as a catalyst for reflection on values and ideas.

Grades 4–12
Art Standard 1, 2, 4



Sketch and Talk Tour

Develop observation and drawing skills by sketching and discussing a variety of artworks. Tour size and availability is limited.

Grades 3–12
Art Standard 1, 3

TOUR TOPICS are available **September through June**. For summer tour themes, please contact **Tour Coordinator** at **443-573-1821**.

Tours for groups of ESOL students may be available upon request.



Math in the Museum

Examine works of art that illustrate symmetry, proportion, and geometric structures. Availability is limited. Maximum tour size is 40.

Grades 3–6
Art Standard 1, 2
Math Standard 1, 2, 3, 6, 7

Image Credits

Unless otherwise noted, all objects are collection of The Baltimore Museum of Art.

Henri Matisse. *Purple Robe and Anemones.* 1937. The Cone Collection, formed by Dr. Claribel Cone and Miss Etta Cone of Baltimore, Maryland, BMA 1950.261. ©2011 Succession H. Matisse/Artists Rights Society (ARS), New York

Georgia O'Keeffe. *Pink Tulip.* 1926. Bequest of Mabel Garrison Siemonn, in Memory of her Husband, George Siemonn, BMA 1964.11.13. ©2011 Georgia O'Keeffe Museum/Artists Rights Society (ARS), New York

Braying Camel. China. Early 8th century. Gift of David K. E. Bruce, BMA 1956.148

Henry Ossawa Tanner. *Bishop Benjamin Tucker Tanner.* 1897. Partial and promised gift of Eddie C. Brown, C. Sylvia Brown, and their Children, Tonya Y. Brown Ingersol and Jennifer L. Brown, Baltimore, BMA 2002.561

John Frederick Kensett. *View on the Hudson.* 1865. Gift of Mrs. Paul H. Miller, BMA 1942.4

Louis Comfort Tiffany. *Mosaic Column.* c. 1905. Tiffany Studios, Corona, New York. Purchase with exchange funds from Gift of Dr. and Mrs. James Bing, Baltimore; and Young Friends of the American Wing Fund, BMA 1989.791

Paul Gauguin. *Vahine no te vi (Woman of the Mango).* 1892. The Cone Collection, formed by Dr. Claribel Cone and Miss Etta Cone of Baltimore, Maryland, BMA 1950.213

Horace Pippin. *Shell Holes and Observation Balloon, Champagne Sector.* c. 1931. Gift of Mrs. John Merryman, Jr., BMA 1967.48

Alexander Calder. *100 Yard Dash.* 1969. Gift of Ryda and Robert H. Levi, Baltimore, BMA 1987.215. ©2011 Calder Foundation, New York/Artists Rights Society (ARS), New York

Paul Cézanne. *Mont Sainte-Victoire Seen from the Bibémus Quarry.* c.1897. The Cone Collection, formed by Dr. Claribel Cone and Miss Etta Cone of Baltimore, Maryland, BMA 1950.12.659

Edgar Degas. *Ballet Dancer Standing.* c. 1886–1890. The Cone Collection, formed by Dr. Claribel Cone and Miss Etta Cone of Baltimore, Maryland, BMA 1950.12.659

Baga peoples (Guinea). *Dance Mask with Superstructure (D'mba).* 19th–mid-20th century. Gift of Alan Wurtzburger, BMA 1957.97

Willow Brook Oval Room. 1799. Baltimore, Maryland. Gift of the City of Baltimore. Installation and renovation made possible by contributors to the Willow Brook Fund, BMA 1965.8

Gable Mask. Early 20th century. Iatmul (Central), Kararau, Middle Sepik River, Independent State of Papua New Guinea. Gift of Alan Wurtzburger, BMA 1955.251.42

Jeremy Alden. *50 Dozen.* 2005 design, this example 2008. Purchased in Memory of Robert M. Thomas, President, Board of Trustees, 1982–84 and Lillian Sarah Greif Bequest Fund, BMA 2008.85. ©Jeremy Alden

Sir Anthony van Dyck. Detail, *Rinaldo and Armida.* 1629. The Jacob Epstein Collection, BMA 1951.103