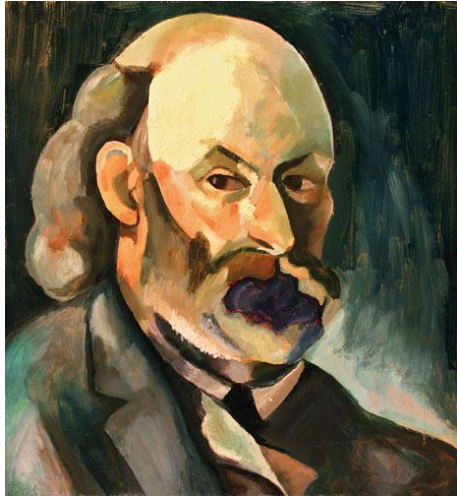


Portrait of Cézanne, c. 1910
Morgan Russell (American, 1886-1953)

Morgan Russell shaped Cézanne's face with large, bold planes of color.



Oil on board; 15¾ x 13¾ inches. Collection of The Honorable and Mrs. Joseph P. Carroll, New York. ©Simone DeVirgile

Morgan Russell's *Portrait of Cézanne* is based on a portrait that Cézanne painted of himself when he was 40 years old.¹ Russell's work was not meant to be an explicit copy of Cézanne's work. Rather, it pays homage to the older master by expanding upon Cézanne's idea of using patches of color to suggest three-dimensional form.

What unconventional colors did Russell use to shape Cézanne's face?

- Cézanne's bald head and face are formed with patches of bright and pale orange, yellow, green, brown, and black.

Are the color patches on Cézanne's face well blended or distinct from each other?

- The colors seem to have clear boundaries above and around the nose. In areas of the mouth and beard, the colors are more blended.

From what direction is light coming?

- A large patch of yellow indicates that light is striking Cézanne's head from the left.
- Brown/black paint creates a dark shadow on the far side of the nose, away from the light.
- Green/brown shadows form in the eye sockets under the eyebrows.

Find areas where Cézanne's face appears to be sculpted as a three-dimensional volume by broad surfaces or "planes" rather than by gradual shading.

- The eyebrows appear to be cut into Cézanne's face at an angle.
- The nose looks as if it had been carved out with a knife.
- The forehead is shaped by flat yellow and green planes rather than shading.
- The shirt collar, folded shirt, and jacket lapel add even more angular planes to the composition.

How do Russell's loose color patches suggest texture?

- Cézanne's beard is made of strokes with irregular edges, suggesting the individual hairs or overall roughness of a beard.
- The texture of Cézanne's hair does not appear radically different from the texture of his jacket.

¹ See Paul Cézanne. *Self-Portrait*, 1879-92. This portrait is in the collection of the Pushkin Museum in Moscow. You can see it at http://www.allposters.com/-sp/Self-Portrait-circa-187985-Posters_i1993045_.htm.