

A CIRCUS FAMILY PICASSO TO LÉGER

February 22 – May 17, 2009



1



2



3



4



5



6



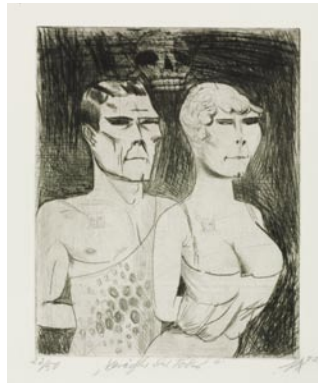
7



8



9



10

Image credits on separate page

For hi-res JPEGs of these images, contact
BMA Communications at 443-573-1870
or spedroni@artbma.org

A CIRCUS FAMILY
PICASSO TO LÉGER

February 22 – May 17, 2009

- 1 Pablo Picasso. *The Acrobat Family*. 1905
Göteborg Museum of Art ©2008 Estate of Pablo Picasso/Artists Rights Society (ARS), New York
- 2 Pablo Picasso. *Circus Family with Violinist (recto)*. 1905
The Baltimore Museum of Art: The Cone Collection, formed by Dr. Claribel Cone and Miss Etta Cone of Baltimore, Maryland, BMA 1950.12.475 ©2008 Estate of Pablo Picasso/Artists Rights Society (ARS), New York
- 3 Pablo Picasso. *Circus Family*. 1905
The Baltimore Museum of Art: The Cone Collection, formed by Dr. Claribel Cone and Miss Etta Cone of Baltimore, Maryland, BMA 1950.272 ©2008 Estate of Pablo Picasso/Artists Rights Society (ARS), New York
- 4 Pablo Picasso. *Two Acrobats with a Dog*. 1905
The Museum of Modern Art, New York. Gift of Mr. and Mrs. William A. M. Burden. ©2008 Estate of Pablo Picasso/Artists Rights Society (ARS), New York. Digital image ©The Museum of Modern Art/Licensed by SCALA/Art Resource, NY
- 5 Jules Chéret. *The Tightrope Dancer*. 1891
The Baltimore Museum of Art: Gift of Mrs. A. McGehee Harvey in Memory of her Father, Henry E. Treide, BMA 1972.79.56
- 6 Max Pechstein. *The Circus*. 1918
The Baltimore Museum of Art: Gift of Mrs. Ralph Booth, BMA 1947.318 ©2008 Artists Rights Society (ARS), New York/Pechstein Hamburg Toekendorf/VG Bild-Kunst, Bonn
- 7 Fernand Léger. *Circus*. 1950
The Baltimore Museum of Art: Purchase with exchange funds from Nelson and Juanita Greif Gutman Collection, BMA 2006.92.25 ©2008 Artists Rights Society (ARS), New York/ADAGP, Paris
- 8 Fernand Léger. *Circus*. 1950
The Baltimore Museum of Art: Purchase with exchange funds from Nelson and Juanita Greif Gutman Collection, BMA 2006.92.27 ©2008 Artists Rights Society (ARS), New York/ADAGP, Paris
- 9 Georges Rouault. *Portrait of a Clown*. 1931–1938, published 1938.
The Baltimore Museum of Art: Gift of Naomi Hendler Legum and Leslie Legum, Baltimore, BMA 1991.117 ©2008 Artists Rights Society (ARS), New York/ADAGP, Paris
- 10 Otto Dix. *The Disdainers of Death*. From the portfolio *Circus*. 1922
The Baltimore Museum of Art: Print Fund, BMA 1950.116 ©2008 Artists Rights Society (ARS), New York/VG Bild-Kunst, Bonn