

Matisse as Printmaker

October 25, 2009 – January 3, 2010



1



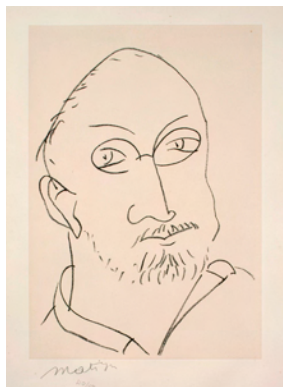
2



3



4



5



6



7



8



9



10

All works are by Henri Matisse.

- 1 *Henri Matisse Engraving*
- 2 *The Persian*
- 3 *Young Woman with Face Buried in Arms*
- 4 *Head of a Woman, Mascaron*
- 5 *Large Mask*
- 6 *The Blue Eyes*
- 7 *Patitcha*
- 8 *Three Heads. To Friendship*
- 9 *Marie-José in a Yellow Dress (III)*
- 10 *Large Virgin*

Full credits enclosed on separate page.

For hi-res JPEGs of these images, contact
BMA Communications at 443-573-1870
or spedroni@artbma.org.

Matisse as Printmaker

October 25, 2009 – January 3, 2010

For hi-res JPEGs of these images, contact BMA Communications at 443-573-1870 or spedroni@artbma.org.

Please note: images of works by Henri Matisse must be reproduced in their entirety and may not be cropped, colorized, altered, or overprinted with text or any other artwork. All works by Matisse should be credited as ©2007 Succession H. Matisse, Paris/Artists Rights Society (ARS), New York.

The following works are by Henri Matisse.

- 1 *Henri Matisse Engraving*. 1900–03. Pierre and Tana Matisse Foundation (1303–105083). ©2009 Succession H. Matisse/Artists Rights Society (ARS), New York. Courtesy American Federation of Arts
- 2 *The Persian*. 1929. Pierre and Tana Matisse Foundation (1245–101015). ©2009 Succession H. Matisse/Artists Rights Society (ARS), New York. Courtesy American Federation of Arts
- 3 *Young Woman with Face Buried in Arms*. 1929. The Baltimore Museum of Art: The Cone Collection, formed by Dr. Claribel Cone and Miss Etta Cone of Baltimore, Maryland, BMA 1950.12.99. ©2009 Succession H. Matisse/Artists Rights Society (ARS), New York
- 4 *Head of a Woman, Mascaron*. 1938. Pierre and Tana Matisse Foundation (1460–107016). ©2009 Succession H. Matisse/Artists Rights Society (ARS), New York. Courtesy American Federation of Arts
- 5 *Large Mask*. 1944. Pierre and Tana Matisse Foundation (1369–103051). ©2009 Succession H. Matisse/Artists Rights Society (ARS), New York. Courtesy American Federation of Arts
- 6 *The Blue Eyes*. 1935. The Baltimore Museum of Art: The Cone Collection, formed by Dr. Claribel Cone and Miss Etta Cone of Baltimore, Maryland BMA 1950.259. ©2009 Succession H. Matisse/Artists Rights Society (ARS), New York
- 7 *Patitcha*. 1947. Pierre and Tana Matisse Foundation, New York, on extended loan to The Baltimore Museum of Art. ©2009 Succession H. Matisse/Artists Rights Society (ARS), New York
- 8 *Three Heads. To Friendship*. 1951. Pierre and Tana Matisse Foundation, New York, on extended loan to The Baltimore Museum of Art. ©2009 Succession H. Matisse/Artists Rights Society (ARS), New York
- 9 *Marie-José in a Yellow Dress (III)*. 1950. Pierre and Tana Matisse Foundation (1454–104051). ©2009 Succession H. Matisse/Artists Rights Society (ARS), New York. Courtesy American Federation of Arts
- 10 *Large Virgin*. 1950–51. Pierre and Tana Matisse Foundation (1335–103004). ©2009 Succession H. Matisse/Artists Rights Society (ARS), New York. Courtesy American Federation of Arts