



PRINT BY PRINT

SERIES FROM DÜRER TO LICHTENSTEIN

October 28, 2011 – March 25, 2012

Albrecht Dürer. *Saint John Devouring the Book* from the series *The Apocalypse*. c. 1496-1498, printed 1511. The Baltimore Museum of Art: Garrett Collection, BMA 1946.112.5855.



Albrecht Dürer. *Saint John's Vision of the Seven Candlesticks* from the series *The Apocalypse*. c. 1496-1498, printed 1511. The Baltimore Museum of Art: Gift of Blanche Adler, BMA 1934.112.5847



Sonia Delaunay. *Plate 24* from the portfolio *Compositions, Colors, Ideas*. 1930. The Baltimore Museum of Art: Friends of Art Fund, BMA 1997.152.24. © L & M SERVICES B.V. The Hague 20110816

Sonia Delaunay. *Plate 36* from the portfolio *Compositions, Colors, Ideas*. 1930. The Baltimore Museum of Art: Friends of Art Fund, BMA 1997.152.36. © L & M SERVICES B.V. The Hague 20110816



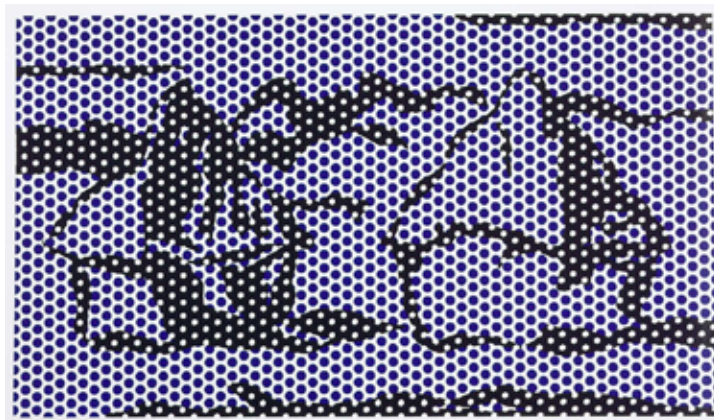
Ludovic Napoléon Lépic. *Trunk of a Chestnut Tree* from the series *Views from the Banks of the Scheldt*. c.1870-1876. The Baltimore Museum of Art: Garrett Collection, BMA 1984.81.21



Ludovic Napoléon Lépic. *Calm* from the series *Views from the Banks of the Scheldt*. c.1870-1876. The Baltimore Museum of Art: Garrett Collection, BMA 1984.81.18

Hans Collaert. *Plate* from the series *Designs for Pendants*. 1581. The Baltimore Museum of Art: Purchased in Honor of Barbara Knafel Scherlis, BMA 1999.90.2

Hans Collaert. *Plate* from the series *Designs for Pendants*. 1581. The Baltimore Museum of Art: Purchased in Honor of Barbara Knafel Scherlis, BMA 1999.90.9



Roy Lichtenstein. *Haystack #3* from the series *Haystacks*. 1969. The Baltimore Museum of Art: Sidney M. Friedberg Accessions Fund for Prints and Drawings, BMA 1996.80.3. © Estate of Roy Lichtenstein



Andrew Raftery. *Scene One* from the portfolio *Open House: Five Engraved Scenes*. 2008. The Baltimore Museum of Art: Women's Committee Acquisitions Endowment for Contemporary Prints and Photographs, BMA 2008.128.1. Courtesy of the Artist and Mary Ryan Gallery, New York



Andrew Raftery. *Scene Five* from the portfolio *Open House: Five Engraved Scenes*. 2008. The Baltimore Museum of Art: Women's Committee Acquisitions Endowment for Contemporary Prints and Photographs, BMA 2008.128.5. Courtesy of the Artist and Mary Ryan Gallery, New York